



This is GE Healthcare

An Overview

Imagination at work

Last updated July 2014

This is
GE Healthcare



General Electric: A heritage of innovation



- Founded by Thomas Edison in 1878
- Only company from the original 1896 Dow Jones index still listed today
- Rated AA+ with stable outlook by S&P
- 305,000 employees world-wide
- Operating in more than 160 countries



General Electric today

Energy

Healthcare

Aviation

Transportation

Capital

Home & Business,
Solutions, Media

Energy Services
Oil & Gas
Power & Water



General Electric today



- **35,800 patents** filed by GE since 2000
- **100 million dollars** have been pledged to breast cancer research by GE and VC partners
- **20 seconds** – how often someone in the U.S. suffers a brain injury
- **40 million dollars** that have been pledged in a 4-year partnership with the NFL to develop technologies to improve diagnosis and therapies



GE Healthcare today



- **\$18 billion:** global business unit of GE
- **46,000:** number of employees worldwide
- **\$1 billion+** per year investment in R&D
- Core strengths in bio-sciences, medical imaging & information technologies
- Headquartered in Pollards Wood, UK
 - President: John Dineen

Did you know?
GE invented the X-ray machine.



R&D Facilities

GE Software Center
San Ramon, CA

Advanced Manufacturing & Software Technology Center
Van Buren, MI

Global Research – Europe
Munich, Germany

Global Research HQ
Niskayuna, NY

China Technology Center
Shanghai, China

Oil & Gas Global Research Center
Oklahoma City, OK

Global Research Center
Rio de Janeiro, Brazil

John F. Welch Technology Center
Bangalore, India

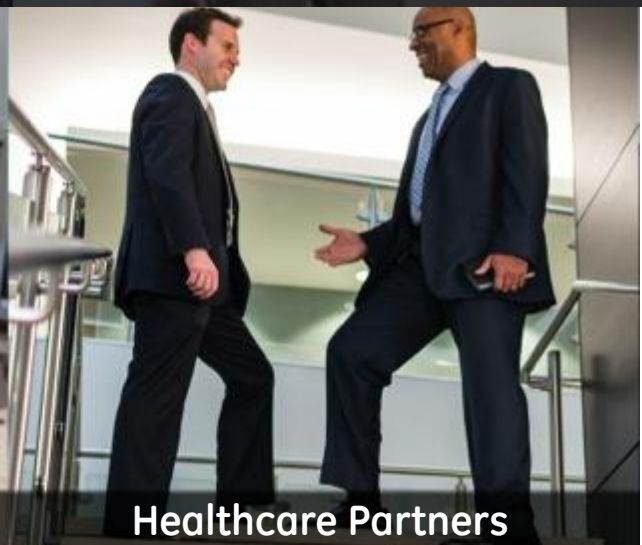
2,800
Scientists & technologists strong
in 8 global research facilities



Manufacturing facilities around the globe



Broad solutions for healthcare



Customers



Our key customers include:

- Healthcare systems, hospitals, and clinics
 - Physicians
 - Clinicians
 - Nurses
 - Executives and administrators
 - IT managers
 - Biomedical engineers
 - Construction managers
- Government officials
- Pharmaceutical firms
- Genetics researchers
- Bio-science researchers



Healthcare IT



- Providing integrated care solutions that create actionable insight across the healthcare system and care pathway, leading to better clinical and financial outcomes
- Enterprise imaging
- Care delivery management
- Population health management
- Financial management

Did you know?
GE Healthcare is investing \$2 billion
in software solutions.



Healthcare Systems



- Helping doctors make more informed decisions for a sound diagnosis
 - Advancing every phase of patient care from diagnostic imaging to routine testing to life-critical care
 - Anesthesia and respiratory care
 - Bone densitometry
 - Computed tomography
 - Diagnostic cardiology
 - Interventional
 - Mammography
 - Maternal-infant care
 - Molecular imaging
 - Monitoring solutions
 - Magnetic resonance imaging
 - Service
 - X-ray
 - Ultrasound



Life Sciences



- Accelerating precision medicine with tools for biotechnology R&D, biopharma manufacturing, cell therapy & regenerative medicine, diagnostic imaging, molecular & precision diagnostics
- Research and applied markets
- Bioprocess
- In Vitro diagnosis
- Services
- Core imaging

Did you know?

GE Life Sciences has 10,000 employees in over 100 countries.



Surgery



Mobile Fluoroscopic Imaging Systems to help guide minimally invasive surgical procedures

- Vascular
- Orthopedics
- Spine
- Urology
- Cardiac
- General Surgery
- Pain Management
- Outpatient Interventional



Healthcare Partners



- A product agnostic global advisory firm that specializes in designing future state operating models, transforming culture, and implementing change to improve patient experience, outcomes and cost
- Focus areas include:
 - Clinical transformation
 - Patient care capacity management
 - Management & leadership systems
 - Patient safety
 - Performance transformation



Global Services



Healthcare Operations Management

Helping health systems manage their operational resources to deliver high quality care safely, efficiently, and cost effectively

- **Asset Optimization:** deploying and maintaining the right mix of clinical equipment to help lower costs and enable safer, timely care
- **Workforce Optimization:** empowering staff to perform at their best while controlling labor costs through scheduling, staffing, and management solutions
- **Patient Flow Optimization:** designing care delivery processes to help reduce wait times and operationalize quality and safety standards



GE Presence within the Country



- GE works in Italy since 1908
- 8 Business Units
- **11.600** employees
- 23 sites
- 3 R&D Centers
- 1 Learning Center
- \$2.6B revenues in 2013
- **\$9.6B** business volume in 2013
- Global HW of GE O&G Turbomachinery and GE Aviation Avio Aero



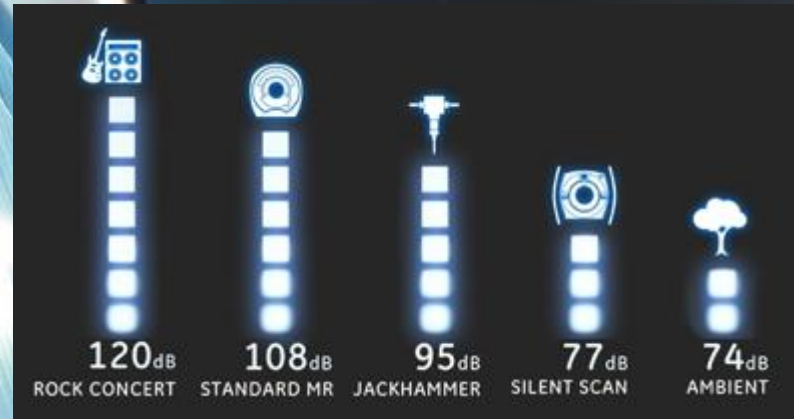
Strong Footprint... Huge Contribution to Italian Export

Some cool products



A FEW COOL PRODUCTS

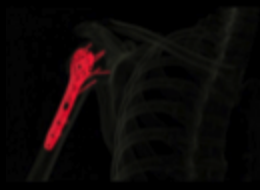
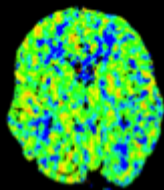
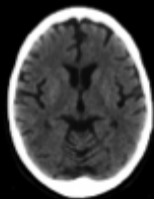
Silent MR



A FEW COOL PRODUCTS

Revolution CT

Revolution*CT was designed from the ground up to address the most challenging patient needs through the convergence of whole organ coverage, image quality and speed. Uncompromised image quality and clinical capabilities make images look like works of art.



*Not yet CE marked. Not available for sale in all regions.

A FEW COOL PRODUCTS

Discovery IGS 730



The Discovery IGS 730 angiography system brings both high-quality imaging and complete workspace freedom to the hybrid operating room to perform cardiac angulations without compromising detector coverage for endovascular procedures.



Global design



Global design and user expertise



- Global design is the multi-disciplinary team of designers, researchers, strategists and engineers who work together to architect healthcare solutions driven by human empathy and need
- Driven by design, empowered by empathy
 - Inspired by human need, we shape ideas that affect the fit, finish, form factor and user experience of GE Healthcare products
- We help humanize healthcare
 - With our unique perspective on empathy, we approach design thinking with the patient and their personal experience in mind
- From real world insight to design reality
 - Our award winning designers help our GE partners easily navigate from ideation to prototype with low-fidelity, cost-saving solutions



The environment



Healthcare trends



- Patient-centric care
 - Better health for more people at lower cost
- Towards wellness and prevention
 - From post-symptomatic diagnosis to pre-symptomatic screening
 - Improved access through telehealth
- Clinical convergence
 - Diagnostic tests (in vivo and in vitro)
 - Diagnosis linked to therapy
 - Convergence of pharma/diagnostic industries
- Productivity and 'cost-out' driven
 - Payors demand rigorous cost/benefit analysis
 - Accessible and actionable patient information



Need for fundamental change



- Aging population
- People with multiple diseases
- Treatment costs
- Productivity loss
- **Cancer:** 1 in 3 people will get cancer¹
- **Heart disease:** 1 person dies from CVD every 33 seconds²
- **Brain disorders:** 1 in 8 people 65 and older has Alzheimer's³

¹Cancer Research UK

²American Heart Association

³Alzheimer's Association



How can GE help?



The need for healthcare innovation

Healthcare needs

- “Big health challenges”
 - Rise in chronic and costly diseases: Alzheimer’s, cancer, congestive heart failure, obesity
- Global vs. local responses
 - Local solutions with global applicability
 - Tools to address rural health
- Broaden technology & services
 - Innovation that drives access and productivity

Best solutions

- Technology for lower-cost outcomes
 - Targeted & “just what you need” technologies and services
- Accelerate healthcare IT
 - Enable physicians through decision support, productivity tools and financing
- Rural & other underserved focus
 - Health essentials: water & energy, financing
- Consumer-driven health
 - More innovations outside of hospitals (e.g. homes, retail settings)
 - Consumer awareness, motivation

Healthcare is changing the world...so is GE.



healthymagination



Sustainable health

- \$6 billion strategy to revolutionize the world's health by improving the quality, access, and affordability of care
- Working to transform how we treat disease, empower communities to get healthier, and build a healthcare system that helps people live better lives
- Technology, people, and partnerships – this is how change happens.



